

- 2020** The 2nd production unit in Lakkoma, Chalkidiki becomes fully operational and covers the entire region of Northern Greece and the Balkan countries.
- 2018** The installation of the production equipment in the 2nd production unit is completed.
- 2017** The construction of a 2nd production unit in Lakkoma, Chalkidiki commences with an equivalent capacity yet newer technology than that in Lavrio.
- 2011** The production capacity of the facilities in Lavrio is doubled, with a major investment in human resources and state-of-the-art equipment.
- 2000** The Company's vision is decided and launched. The construction and operation of the first production unit for PET radiopharmaceuticals in Greece.
- 1992** The company BIODOSMOS S.A. is established

BIOKOSMOS S.A.



ATTICA
Area Panormos, 19500
Lavrio Attiki - Greece

NORTHERN GREECE
Lakoma Industrial Area
Halkidiki, 630 80

Phone center:
Tel: +30 22920 63900
Fax: +30 22920 69235

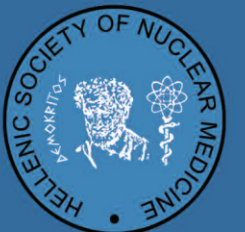
www.biokosmos.eu

ISSN 1790-5427

Hellenic Journal of Nuclear Medicine

Volume 24 • Number 3 • September-December 2021

Indexed/abstracted by: MEDLINE, Science Citation Index Expanded, Journal Citation Reports/Science Edition, EMBASE, Thomson-Reuters and Scopus Info and Index Copernicus. Listed by the International Centre for Scientific Research-



The first hellenic journal of nuclear medicine

Impact factor: 1.102

Original Articles: Prognostic value of intratumoral heterogeneity of preoperative ¹⁸ F-FDG PET/CT in pancreatic cancer. B.S. Kim, S.J. Kim	172	Review Articles: ¹⁸ F-FDG PET/CT in GIST treatment response evaluation beyond Imatinib. C. Altini, P. Mammucci et al.	239
- A comparison of the diagnostic performance of ¹⁸ F-PSMA-1007 and ⁶⁸ GA-PSMA-11 in the same patients presenting with early biochemical recurrence. T. Lengana, I.O. Lawal et al.	178	- Radionuclide imaging of hypoxia: Where are we now? Special attention to cancer of the cervix uteri. K.M.G. Mokoala, I.O. Lawal et al.	247
- The utility of ¹⁸ F-FDG PET/CT for evaluation of tumor response to immune checkpoint inhibitor therapy and prognosis prediction in patients with non-small-cell lung cancer. K. Kitajima, Y. Kawanaka et al.	186	Case Report: A case of pancreatic carcinosarcoma detected on PET/CT. L. Cheng, Y. Liu et al.	262
- Quantitative ⁶⁷ Ga-citrate SPECT/CT for evaluating disease activity in patients with interstitial lung disease. K. Kitajima, N. Azuma et al.	199	Images: Uncommon solitary nasal extramedullary plasmacytoma detected by ¹⁸ F-FDG PET/CT. L. Urso, N. Ortolan et al.	265
- Usefulness of texture analysis in ¹²³ I-FP-CIT for the differentiation of AD and DLB subtypes. M. Yoshimura, E. Arizono et al.	206	- The hypoglossal nerve palsy involved by papillary thyroid carcinoma detected on ¹⁸ F-FDG PET/MRI. S. Huang, H. Dai et al.	267
- The prognostic significance of stress-only myocardial perfusion scan: A 5 year observational study. J. Malamitsi, S. Giourgouli et al.	214	- Adult Langerhans cell histiocytosis involving adjacent vertebra on ¹⁸ F-FDG PET/CT Imaging. H. Xie, W. Zhang et al.	269
- Homocysteine-related alterations of ¹⁸ F-FDG brain pattern in metabolic diseases. Z. Képes, C. Aranyi et al.	222	- Bilateral renal metastasis from intracranial solitary fibrous tumor/hemangiopericytoma revealed on ¹⁸ F-FDG PET/CT and contrast-enhanced CT. L. Xiao, L. Li	272
Research Articles: Association of leukotrienes and prostaglandins with splenic ¹⁸ F-FDG uptake in hepatobiliary cancer patients. K. Kim, S.J. Kim	228	- The clinical utility of SPECT/CT hybrid imaging on bleeding Meckel's diverticulum in adults. M. Stathaki, F. Psarakis et al.	274
- Optimal timing of imaging in gastric emptying scintigraphy for the detection of delayed emptying. M.F. Georgiou, E. Sfakianaki et al.	234	Letter to the editor: Nuclear Medicine decision makers in need of help: the remote places' cyclotron installation example. C. Melidis, S. Noblet et al.	276